

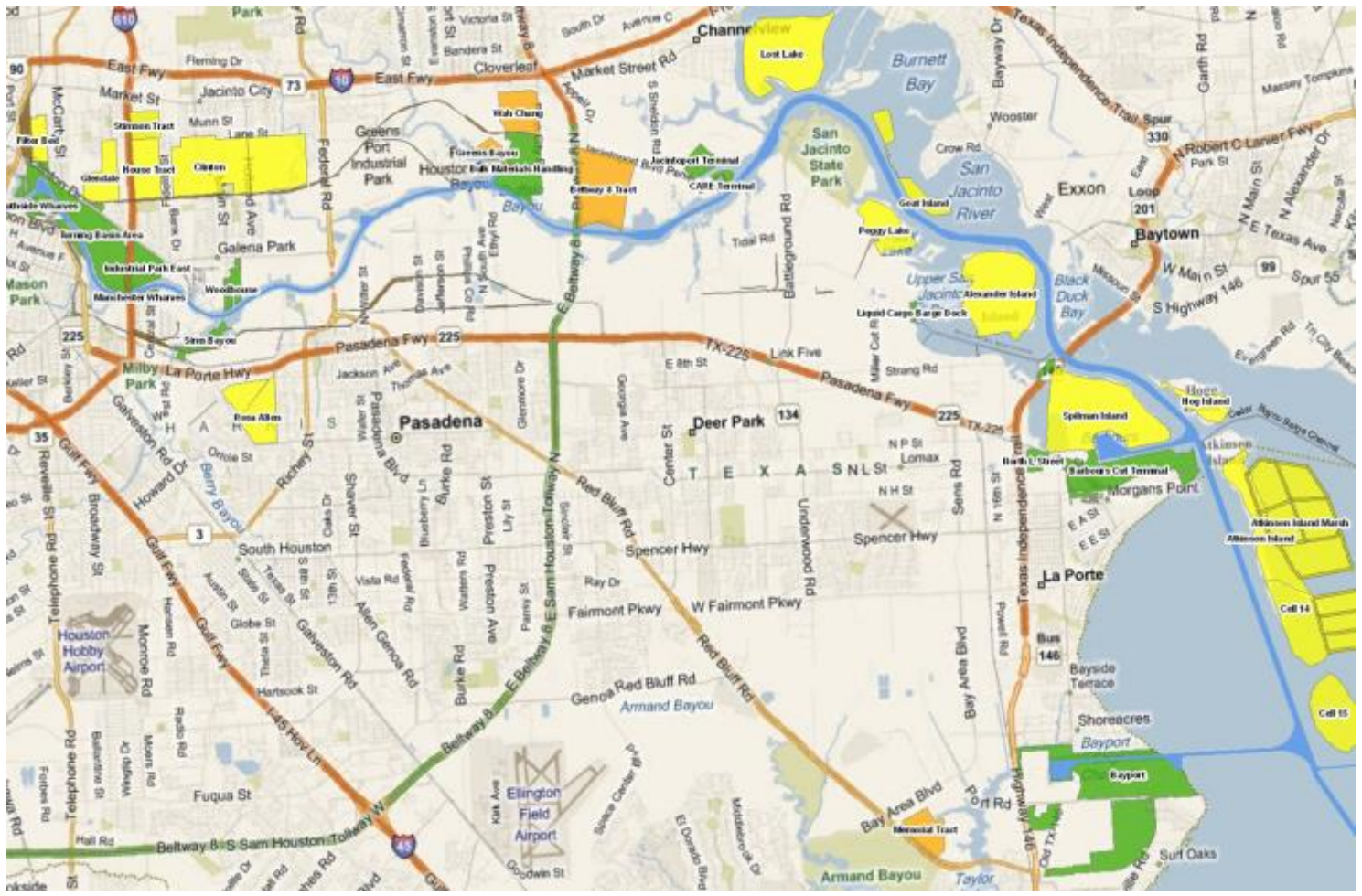


The Port of Houston and the Reliability and Security of Regional Maritime Trade

March 11, 2015

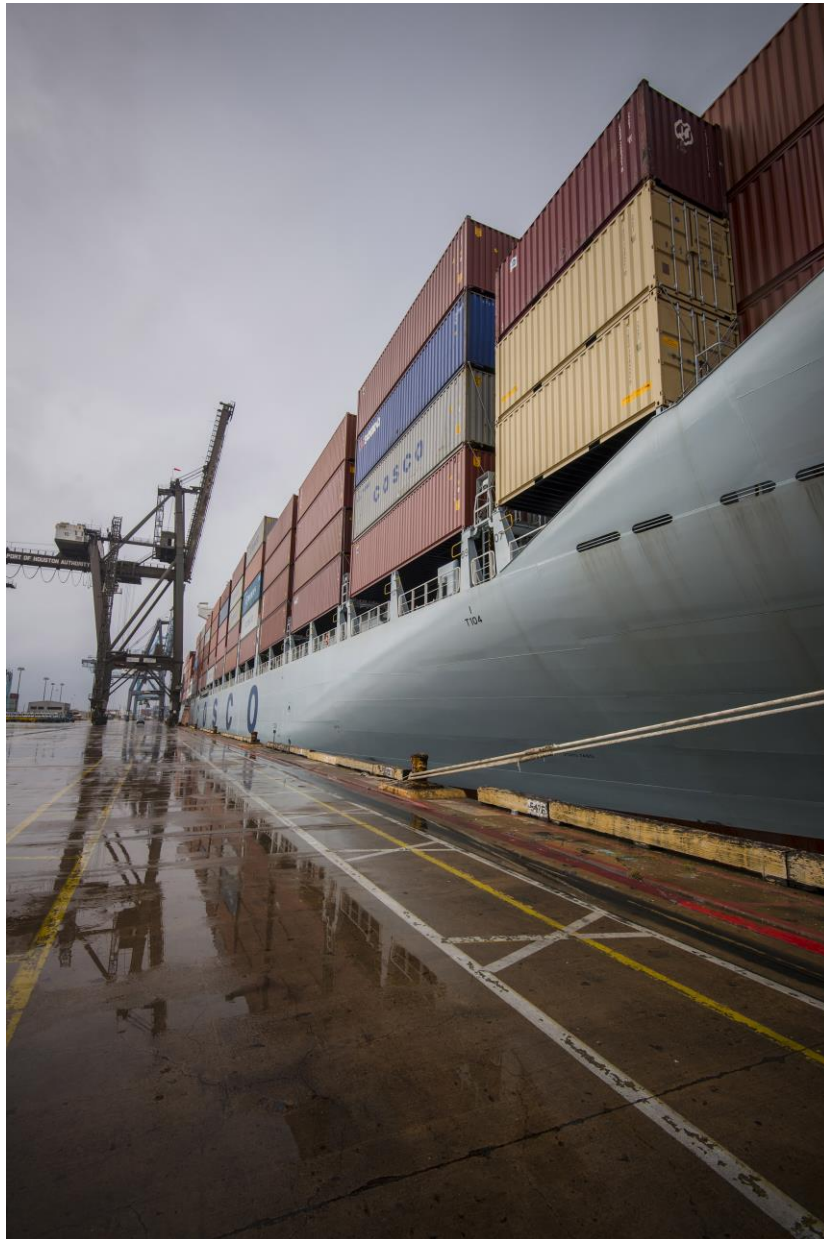


PORT *of* HOUSTON AUTHORITY





PORT of HOUSTON AUTHORITY



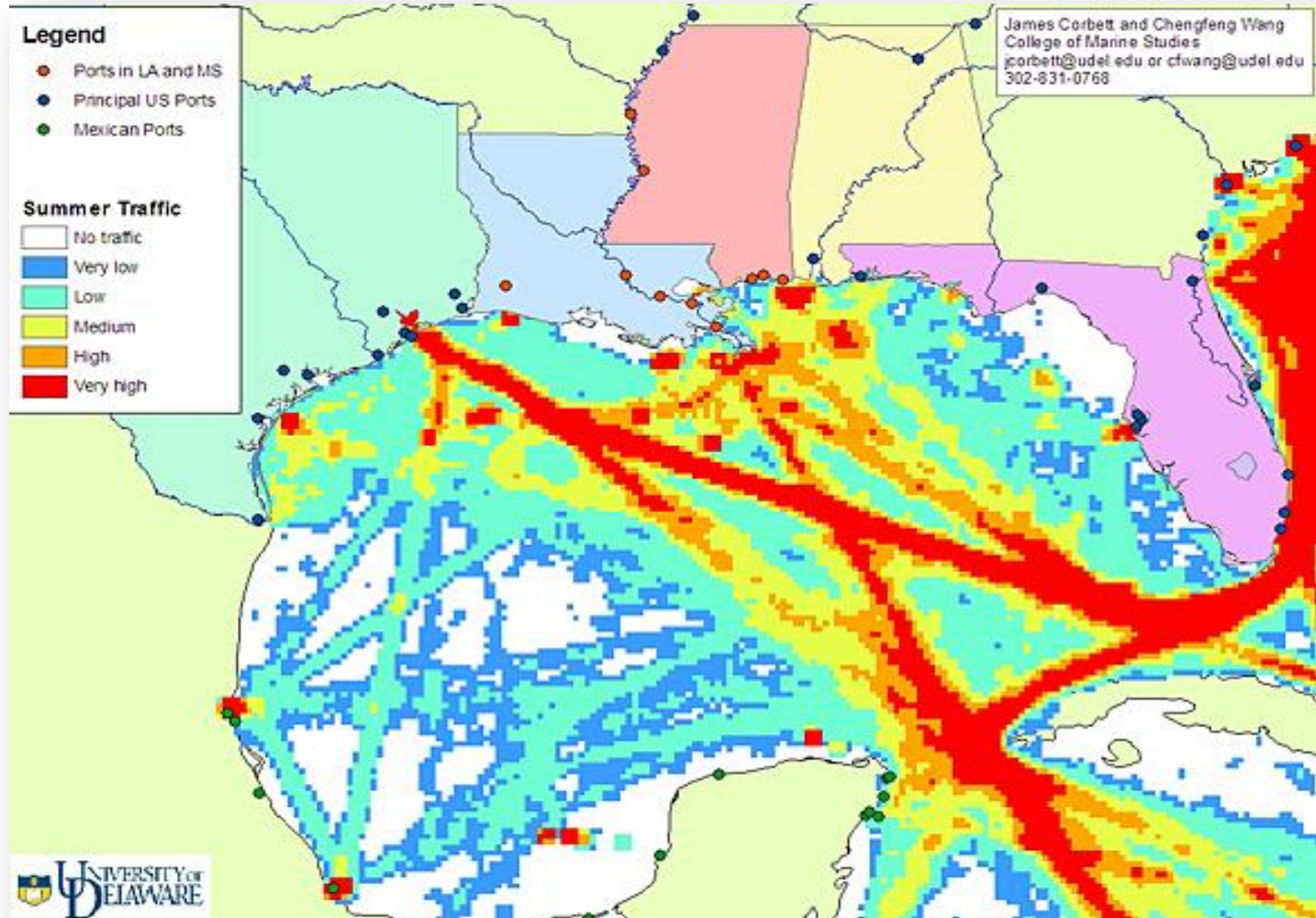
PORT of HOUSTON AUTHORITY

The Port of Houston and The Houston Ship Channel

- ❑ No. 1 U.S. and world's 2nd largest petrochemical complex
- ❑ No. 1 U.S. port in foreign tonnage
- ❑ No. 2 U.S. port in total tonnage

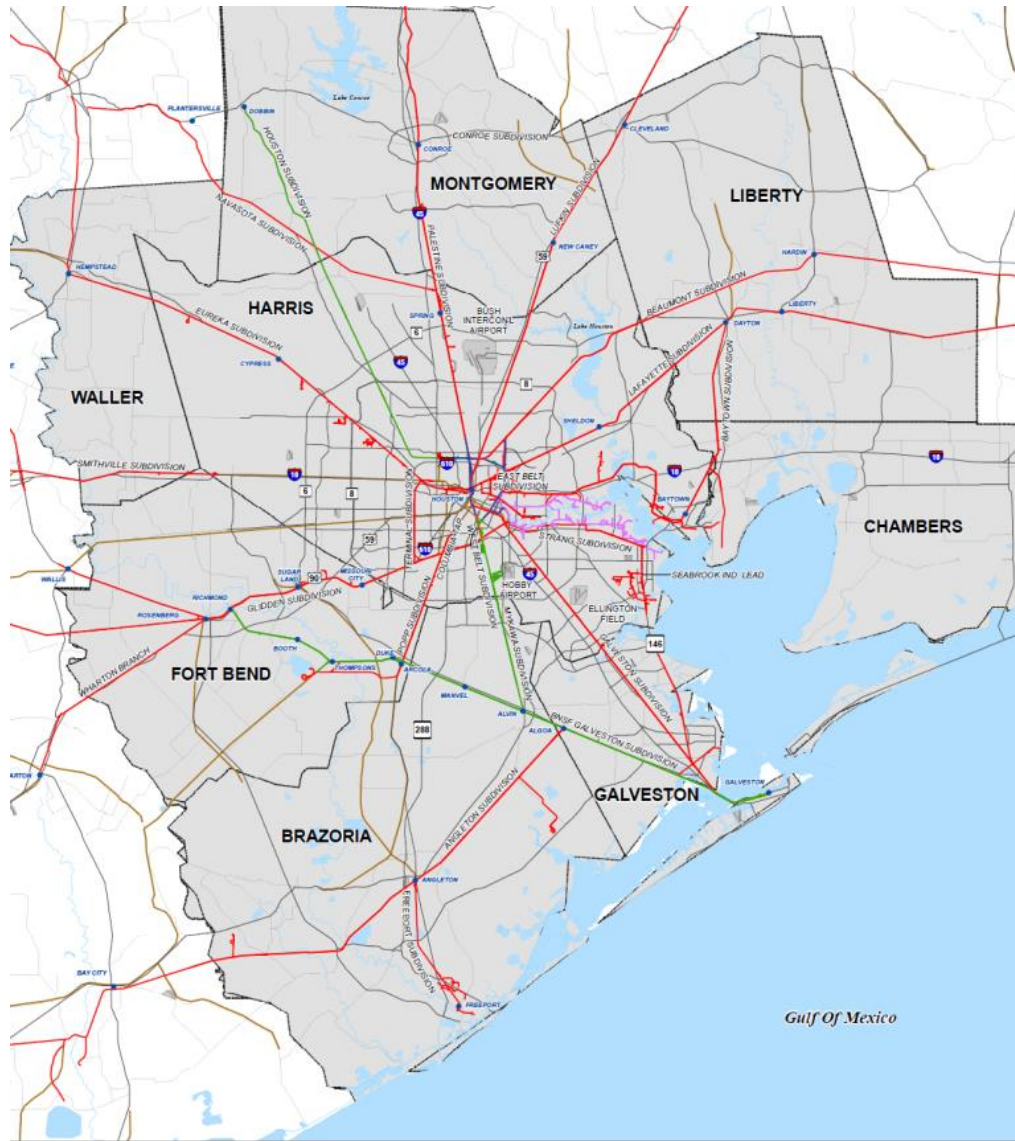
...and the region is the nation's
leading export market

U.S. Gulf Maritime Traffic

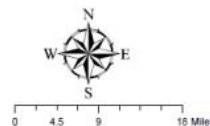


Eight County Rail Network

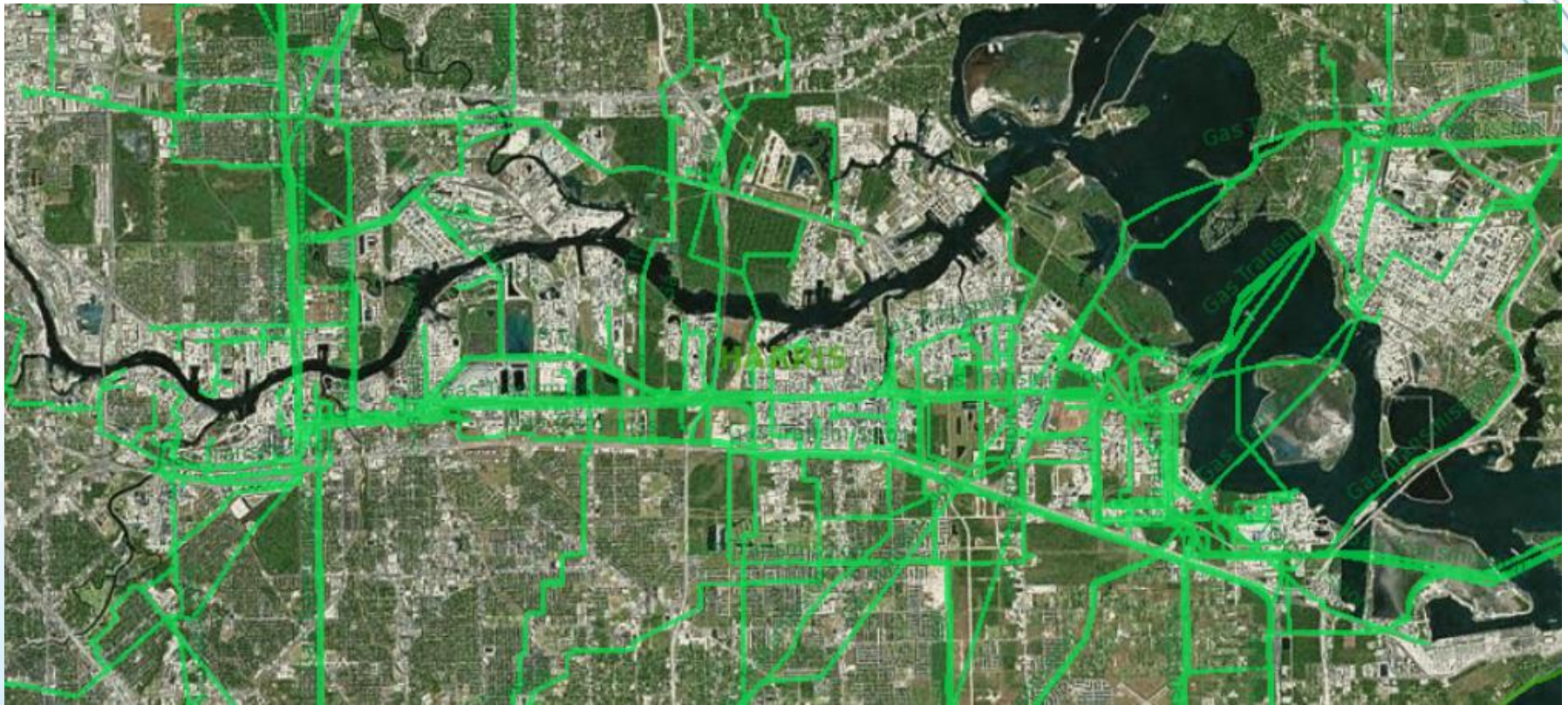
Source:
Houston
Regional
Freight Rail
Study,
TxDOT
2007



Houston Area
Railroad
Subdivision Map



- UNION PACIFIC RAILROAD
- BNSF RAILROAD
- PORT TERMINAL RAILROAD
- HB&T RAILROAD
- ABANDONED RAIL LINES



Regional Pipeline Network

Source: Texas Railroad Commission



